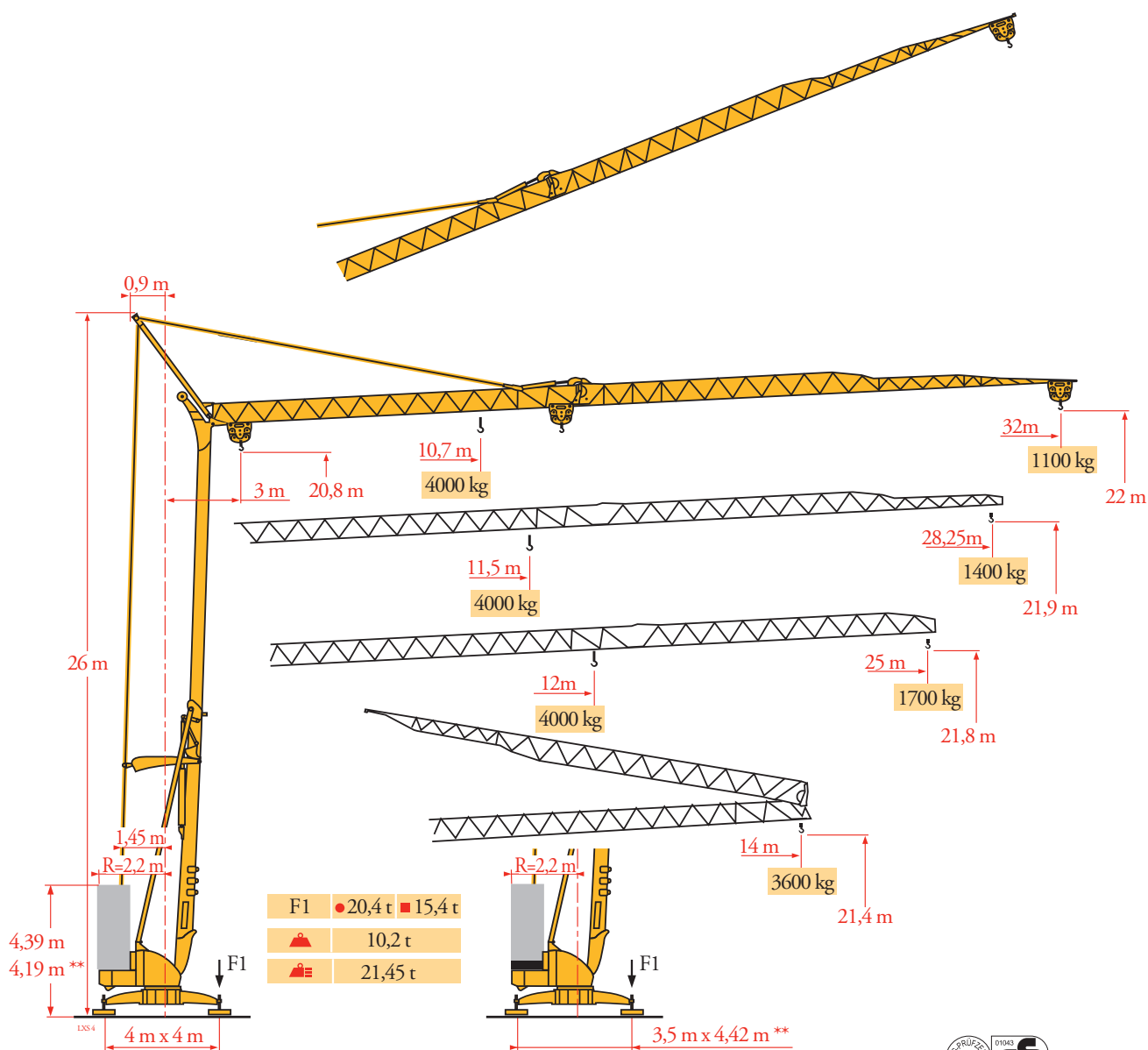
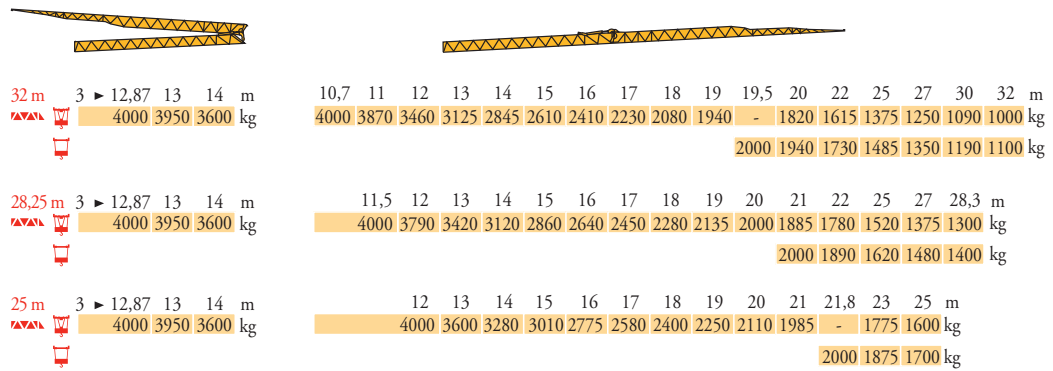


# Potain Igo 36



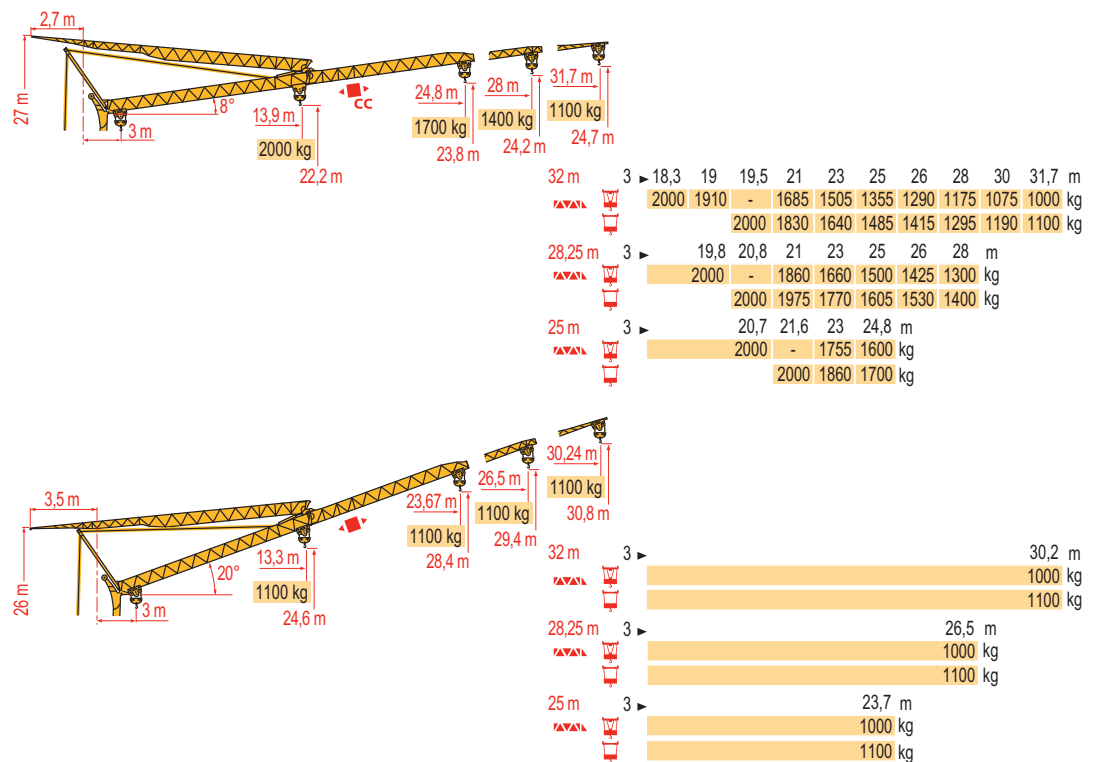
Courbes de charges  
Lastkurven  
Load diagrams  
Curvas de cargas  
Curve di carico  
Curva de cargas  
Диаграммы грузоподъемностей

LXS 3



Flèche relevée  
Ausleger in Steilstellung  
Luffing jib  
Flecha izada  
Braccio impennato  
Lança inclinada  
Маховая стрела

LXS 4



**FR**

Chariot distributeur  
Chariot distributeur et courbes de charges  
Réactions en service  
Réactions hors service

A vide sans lest (ni train de transport) avec flèche et hauteur maximum

Poids total du lest

**DE**

Verfahrbare Laufkatze  
Verfahrbare Laufkatze und Lastkurven  
Reaktionskräfte in Betrieb  
Reaktionskräfte außer Betrieb

Ohne Last, Ballast (und Transportachse), mit Maximalausleger und Maximalhöhe

Ballast-Gesamtgewicht.

**EN**

Traversing trolley  
Traversing trolley and load diagrams  
Reactions in service  
Reactions out of service

Without load, ballast (or transport axles), with maximum jib and maximum height

Gross ballast weight.

**ES**

Carro distribuidor  
Carro distribuidor y curvas de cargas  
Reacciones en servicio  
Reacciones fuera de servicio

Sin carga, sin lastre, (ni tren de transporte), flecha y altura máxima

Peso total del lastre.

**IT**

Carrellino distributore  
Carrellino distributore e curve di carico  
Reazioni in servizio  
Reazioni fuori servizio

A vuoto, senza zavorra (ne assali di trasporto) con braccio massimo e altezza massima

Peso totale della zavorra.

**PT**

Carro distribuidor  
Carro distribuidor e curva de cargas  
Reacções em serviço  
Reacções fora de serviço

Sem carga (nem trem de transporte)- sem lastro com lança e altura máximas

Peso total do lastro.

**RU**

Грузовая тележка  
Грузовая тележка и диаграммы грузоподъемностей  
Реакции при работе  
Реакции в покое

Вес без груза, балласта (или транспортных осей), с максимальной длиной стрелы и максимальной высотой

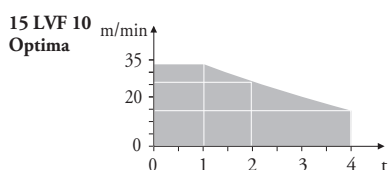
общий вес груза

Mécanismes  
Antriebe  
Mechanisms  
Mecanismos  
Meccanismi  
Mecanismos  
Механизмы

LX5<sub>5</sub>

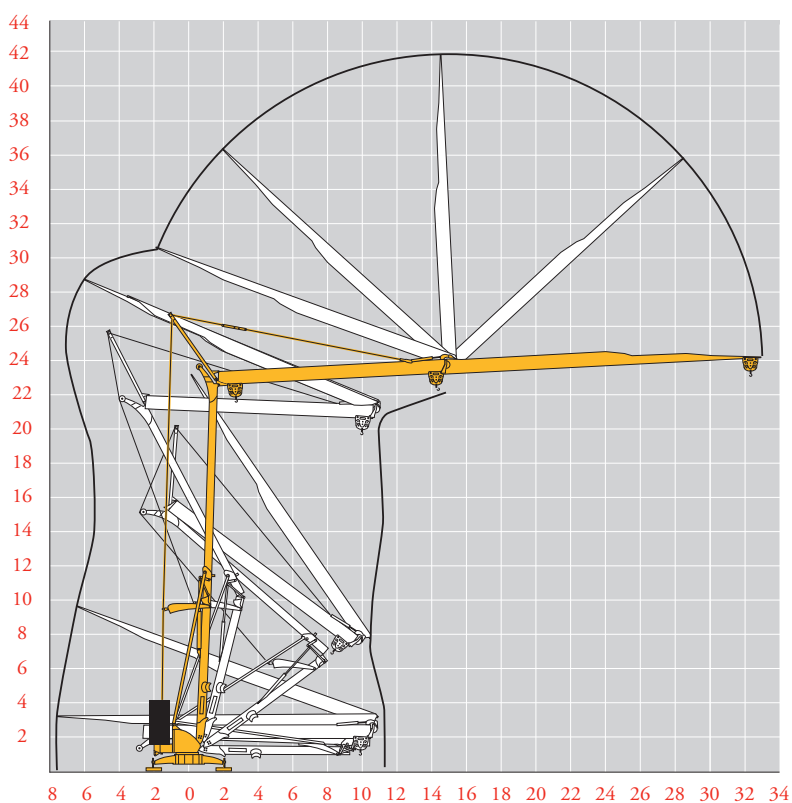
		⚙️					⚙️					ch - PS hp	kW	
⬆️	<b>15 LVF 10 Optima</b>	m/min	3,6	18	30	49	66						15	11
		kg	2000	2000	2000	1100	500							
		m/min	3,6	18	30	54	66	1,8	8,9	15	27	33		
		kg	2000	2000	2000	1000	500	4000	4000	4000	2000	1000		
⬅️	<b>3 DVF5</b>	m/min	19 - 41										3	2,2
⚙️	<b>RVF+41</b>	tr/min U/min rpm	0 → 0,8										4	3

CEI 38 ⚡ IEC 38	kVA
400 V (+6% -10%) 50 Hz	15 LVF 10 : 22 kVA



Montage  
Montage  
Erection  
Montaje  
Montaggio  
Montagem  
Монтаж

LX3<sub>3</sub>



**FR**  
Levage  
Distribution  
Orientation

**DE**  
Heben  
Katzfahren  
Schwenken

**EN**  
Hoisting  
Trolleying  
Slewing

**ES**  
Elevación  
Distribución  
Orientación

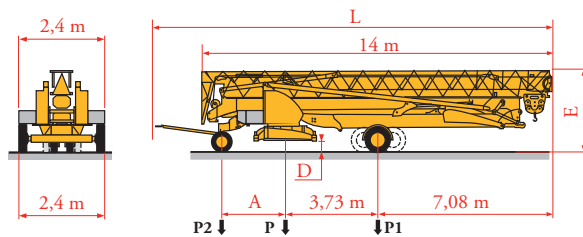
**IT**  
Sollevamento  
Distribuzione  
Rotazione

**PT**  
Elevação  
Distribuição  
Rotação

**RU**  
Подъем  
Перемещение каретки  
Поворот

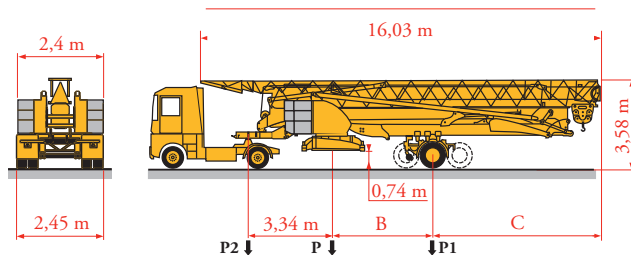
Transport  
 Transport  
 Transport  
 Transporte  
 Trasporto  
 Transporte  
 Транспортировка

LX5



	Km/h	A (m)	D (m)	E (m)	L (m)	P (kg)	P1 (kg)	P2 (kg)
DS62/S120	10	2,35	0,36/0,21	3,2/3,05	15,48	16220	10290	5930
DS61/S125	25	2,45	0,36/0,21	3,2/3,05	15,77	16570	10590	5980

... \*\*



	Km/h	B (m)	C (m)	P (kg)	P1 (kg)	P2 (kg)
SL121/J135	25	3,94	6,87	20685/17485	12760/11980	7925/5500
SL122/J215M	80	4,07	6,74	24955/18555	14398/12867	10557/5688

... \*\*



**FR**

Transport grue  
 toute lestée.

\*\*

Voir documentations  
 techniques.

**DE**

Krantransport mit voller  
 Ballastierung.

Siehe technische  
 Dokumentation.

**EN**

Transport of crane with  
 full ballast.

See technical  
 documentations.

**ES**

Transporte grúa  
 completamente lastrada.

Consulte la  
 documentación técnica.

**IT**

Trasporto con gru  
 completamente  
 zavorrata.

Vedere la documen-  
 tazione tecnica.

**PT**

Transporte de grua  
 totalmente balastrada.

Consultar documen-  
 tações técnicas.

**RU**

Перевозка крана с  
 полным балластом

см. техническую  
 документацию



Document commercial  
 non contractuel. Pour  
 toute information  
 technique se référer à la  
 notice correspondante.

Unverbindliches  
 Vertriebsdokument. Für  
 technische Informationen,  
 siehe die entsprechenden  
 Anweisungen.

This commercial document  
 is not legally binding. For  
 any technical information,  
 please refer to the  
 corresponding instructions.

Documento commercial  
 no contractual. Para  
 cualquier información  
 técnica, ver la noticia  
 correspondiente.

Documento commerciale  
 non vincolante. per tutte  
 le informazioni tecniche  
 fare riferimento al  
 catalogo istruzioni.

Documento comercial não  
 contratual. Para qualquer  
 informação técnica  
 complementar consultar  
 as respectivas instruções.

Этот коммерческий документ  
 не является юридически  
 обязательным. Для получения  
 технической информации, см.  
 соответствующие инструкции.



**Manitowoc - Americas - World Headquarters**  
 2400 S. 44th Street • Manitowoc • WI 54220 USA  
 Tel: +1 920 684 4410 • Fax: +1 920 652 9778

**Manitowoc - Europe, Middle East & Africa**  
 Ecully, France  
 18, rue de Charbonnières B.P. 173 • 69132 ECULLY Cedex • FRANCE  
 Tel: +33 (0)4 72 18 20 20 • Fax: +33 (0)4 72 18 20 00

**Manitowoc - Asia Pacific**  
 16F Xu Hui Yuan Building,  
 1089 Zhongshan No.2 Road (S) • Shanghai 200030 China  
 Tel: +86 21 6457 0066 • Fax: +86 21 6457 4955